

EVENTS

May 5 (Thursday)
Sonoma ASA Meeting
5:00pm – 7:00pm
99 Sixth Street @ Wilson
in Railroad Square
Santa Rosa, CA

May 5 (Thursday)
Cinco de Mota
Come check out our festive
specials!

May 8 (Sunday)
Mother's Day
Is your mom a cannabis
consumer? Come see us for
cannabis-infused chocolates,
honey, and all sorts of goodies
from Mother Nature to your
mother!

May 11 (Wednesday)
East Bay ASA Meeting
Oaksterdam Student Union
1915 Broadway Oakland, CA

Do you need help pick- ing up your medicine?

Both OrganiCann and
Oakland Organics now
have on-site notaries that
can designate a caregiver
to pick up your cannabis
for you! Ask our front desk
staff for hours and details!

**OrganiCann &
Oakland Organics Hours:**
Mon. - Fri: 10am - 7pm
Sat. - Sun: 10am - 6pm

MendoCann Hours:
Mon. - Fri: 10am - 6pm
Sat. - Sun: 10am - 5pm

STRAIN OF THE MONTH

Red Dragon

Red Dragon is lovingly cultivated in Men-
docino County by indoor farmers with a
focus on consistent growing practices
and attention to detail. It is a rare cross of
two little known strains: Himalaya,
Afghanistan and Utopia Haze. It is an
unusual Sativa-dominant blend with a
sublimely aromatic sweet tropical fruit
flavor profile. This iconic flavor melds
well with its high THC level (24.03%) to
produce effects that are emotionally
calming yet physically engaging. Red
Dragon is a great social, giggly and
creative blend that is perfect for small
talkative gatherings with friends, or a



hike on a beautiful day! This
strain is also a favorite
among artists, writers
and others who
revel in creative
pursuits.

EDIBLE OF THE MONTH

Blueberry Green Tea

3 tea bags per pack

\$10

Make this light and
uplifting edible just
the right thing for
Spring by serving it
chilled over ice!
(See our recipe
section to make it
into Sun Tea.)



Natural Cannabis Co.
premium medical
cannabis can be found at
the following locations:

OrganiCann 301 East Todd Rd, Santa Rosa
Oakland Organics 721 Broadway, Oakland
MendoCann 13325 South Hwy. 101, Hopland

RECIPE OF THE MONTH

Very Green Sun Tea



Ingredients -

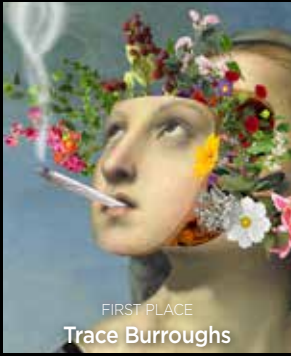
- 1 package Natural Cannabis Company Medicated Tea (flavor of your choice)
- 2 quarts filtered water
- 2 tablespoons NCC Power Honey mixed thoroughly with enough hot water to dissolve the honey completely, (optional and only recommended for those with a high edible cannabis tolerance).

Directions -

- Place all 3 tea bags and water in a glass container with a tight seal. (You can buy a large glass pitcher with a lid that fits tightly or you can use a large mason jar).
- If you choose to add the power honey/water mixture, you can do so at this time. You can also add fruit, citrus slices or fresh mint here for additional flavor if you like.
- Place your glass container outside in direct sunlight for 4-5 hours. If you do not have a spot that gets that much sunlight continually, move it throughout the day to keep it in direct sunlight.
- When the tea's concentration is to your liking, remove the tea bags and transfer your tea to the refrigerator. Enjoy in the next 2 days over ice.



WE CONGRATULATE THE WINNERS AND ARE INSPIRED BY ALL WHO ENTERED!



The Natural Cannabis Company had the best High Art Challenge to date this year! Together with Juxtapoz, we received over 1400 entries from 41 different countries. Besides our first place winner (**Trace Burroughs**) who will receive the **\$10,000 grand prize** for his "Enlightenment" design, we are proud to celebrate the contributions of our second and third place winners as well. Local Jacques Bartels' "Sativa Goddess" and Japanese artist Aica Art's "Angels from Tears, Ofelia" will grace the packaging of some of our top strains.

DURBAN POISON

AVAILABLE IN LIMITED EDITION
"ENLIGHTENMENT"
PACKAGING BY TRACE BURROUGHS

Our grand prize winning artist (Trace Burroughs) for High Art 2016 is from the East Coast, where cannabis is still often viewed in a negative light. Nonetheless, he has been enlightened enough to enjoy its



creativity-enhancing effects for decades. We are featuring a landrace Sativa strain with genetics originating in South Africa, that is widely renowned for its inspiring effects in the packaging that bears Burroughs' High Art design. Durban Poison has a remarkably piney and savory aroma, that makes for a very pleasant, slightly sweet and smokey inhale. However, it is the profoundly creative, and imaginatively focused effects that garner its reputation as a strain that is incredibly true to its Sativa characteristics.



THE NEW NATURAL NCC REFILL

The Natural Cannabis Company is proud to introduce the all new

600MG CO2 OIL VAPE PEN CARTRIDGE!

This cartridge contains a highly refined and unusually potent CO₂-extracted oil that is infused with the actual terpenes naturally present in each cannabis strain for exquisite flavor and effect. This is a cartridge made just for cannasseurs!



CULTIVATING WISDOM™

MAY CULTIVATING TIP

LOVE YOUR MOTHER PLANT

It's nearly Mother's Day, and while the sun is getting sunnier, it is still a bit early to put cannabis plants outside. For best results, consider planting them closer to the Summer Solstice in June. However, as you prepare to put your chosen cuttings and seedlings in the ground, keep in mind that you may find that certain genetics do better than others in your appellation. You may discover that you prefer an earlier finishing time, or plants that grow tall and lanky, or just that certain strains you cultivate are a more enjoyable smoke for you than others. NCC recommends isolating one plant of each strain and preserving it as a mother plant. This will allow you to hold onto the genetic structure of your preferred strains long after the outdoor growing season has passed.

"A mind is like a parachute. It doesn't work if it is not open." - Frank Zappa

NATURAL CANNABIS CO

Premium medical cannabis can be found at the following locations:

OrganiCann 301 East Todd Rd, Santa Rosa
Oakland Organics 721 Broadway, Oakland
MendoCann 13325 South Hwy. 101, Hopland



@naturalcannabis



@naturalcannabis

naturalcannabis.com



facebook.com/oakorganics



@oaklandorganics

oakland-organics.com